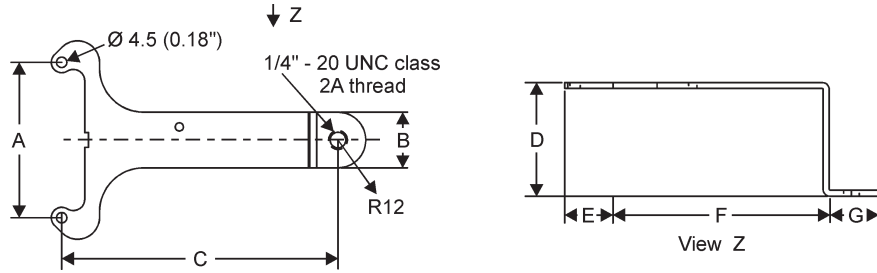


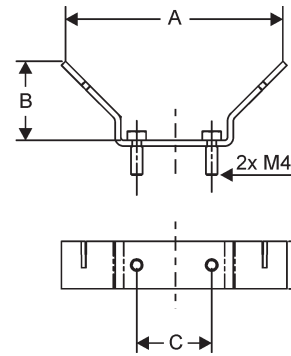
# Brackets

Material: Plated Steel

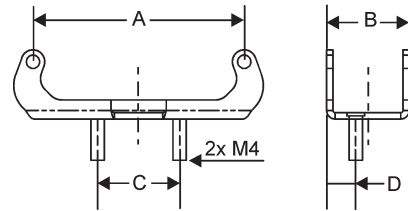
Motor	Part Number		A	B	C	D	E	F	G
ECR ONE ECR UltraSynch	1MS100070	mm	67	24	97	49	21	71	22
		inches	2.64	0.95	3.82	1.93	0.83	2.80	0.87
ECR 81/91 ECR 82/92	1MS100071	mm	67	24	119	49	21	93	22
		inches	2.64	0.95	4.69	1.93	0.83	3.66	0.87



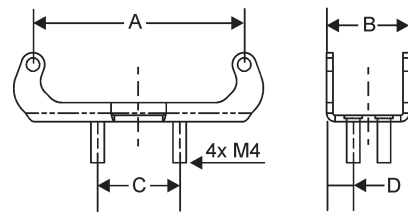
Motor	Part Number		A	B	C	D
ECR 80/90	1MS100005*	mm	75	27	26	16
		inches	2.95	1.06	1.02	0.63



Motor	Part Number		A	B	C	D
ECR 81/91 ECR 82/92	1MS100023*	mm	67	26	26	9
		inches	2.64	1.02	1.02	0.35



Motor	Part Number		A	B	C	D
ECR 81/91 ECR 82/92	1MS100052*	mm	67	26	29	10
		inches	2.64	1.02	1.13	0.39

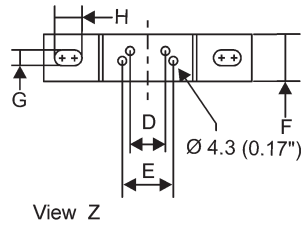
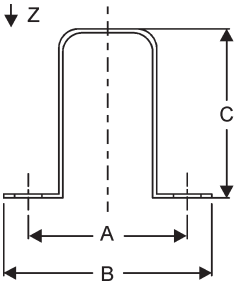


\*Brackets sold assembled onto the motor.

# Brackets

Material: Plated Steel

Motor	Part Number		A	B	C	D	E	F	G	H
ECR 80/90 ECR 81/91 ECR 82/92	1MS100018	mm	81	106	55	18	26	24	8.2	13
		inches	3.18	4.17	2.16	0.71	1.02	0.95	0.32	0.54
	1MS100019	mm	81	106	72	18	26	24	8.2	13
		inches	3.18	4.17	2.83	0.71	1.02	0.95	0.32	0.51
1MS100044	mm	81	106	84	18	26	24	8.2	20	
	inches	3.18	4.17	3.31	0.71	1.02	0.95	0.32	0.79	



## Mounting Options

For ECR80/90, 81/91 and 82/92 motors only.

Please note that the mounting brackets for the ECR80/90 motor can be attached in three positions (A, B, C), as shown here.

In the ECR81/91 and ECR82/92 they can be attached in all four positions (A, B, C, D).

