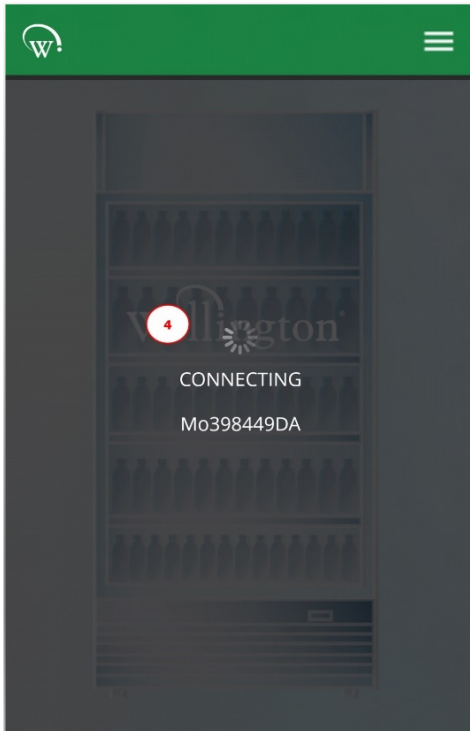






# Connect™ Monitor Instructions Manual

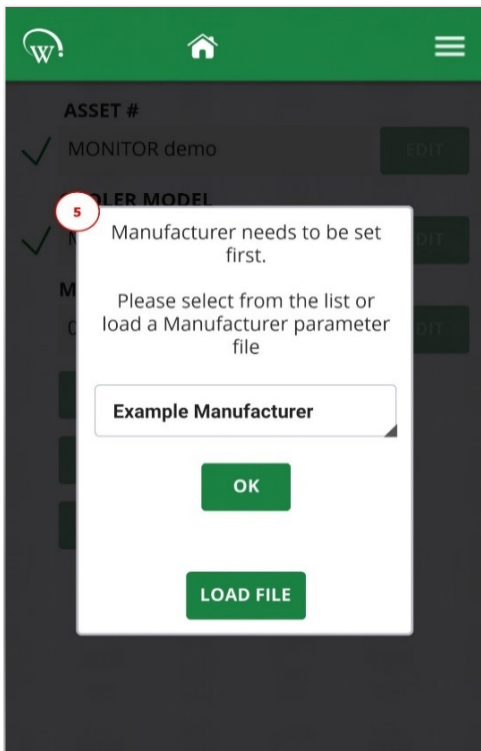
FIELD TRIAL PROTOTYPE SAMPLES




4. "CONNECTING MoXXXXXXXX" will be displayed when NFC is enabled.


 ***The phone may emit a sound and vibration when NFC is successfully enabled on the Connect Monitor.***

You will be automatically connected to Connect Monitor via Bluetooth for visualization and set up.



5. Upon successful connection you will be prompted with the configuration screen. Please specify the Manufacturer, Owner and Brand.

 ***It is vital to configure the device to the correct Manufacturer and Owner.***

 ***This ensures only authorized connections can be made to the device, and data collection is only possible by the assigned Owner.***



## Connect™ Monitor Instructions Manual

FIELD TRIAL PROTOTYPE SAMPLES

Please refer to Field App Quick Steps for detailed instructions on how to:

- WT9403\_Set IDs through SCS Connect Field App
- WT9404\_Set Asset Details through SCS Connect Field App

Available on request.

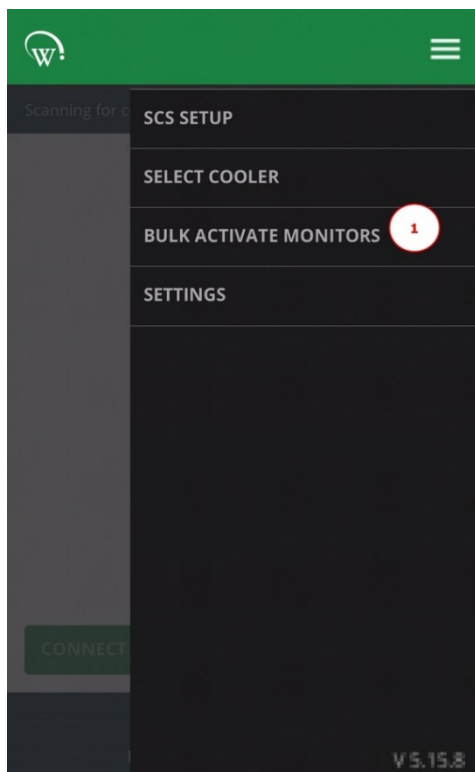
### Bulk Activation process through SCS Field

Open the SCS Field app and follow the steps below.

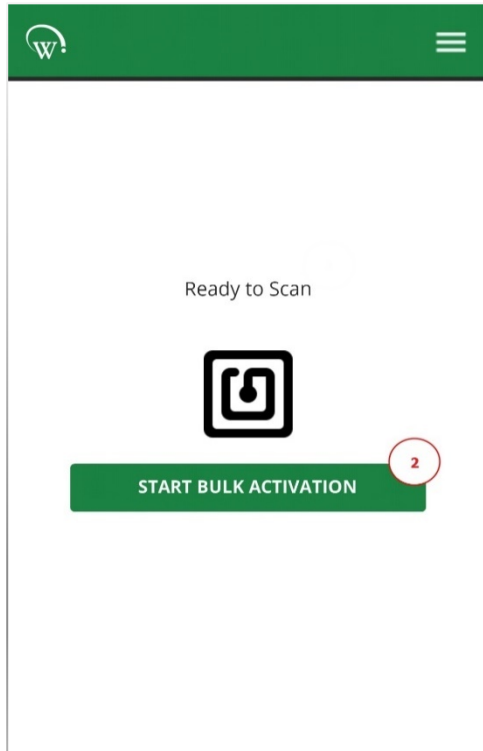


*This option is only available for users with the appropriate permissions.*

- *Please contact the relevant person within your organization (User Manager) if you wish to gain access to the BULK ACTIVATE MONITORS option within SCS™ Field App.*

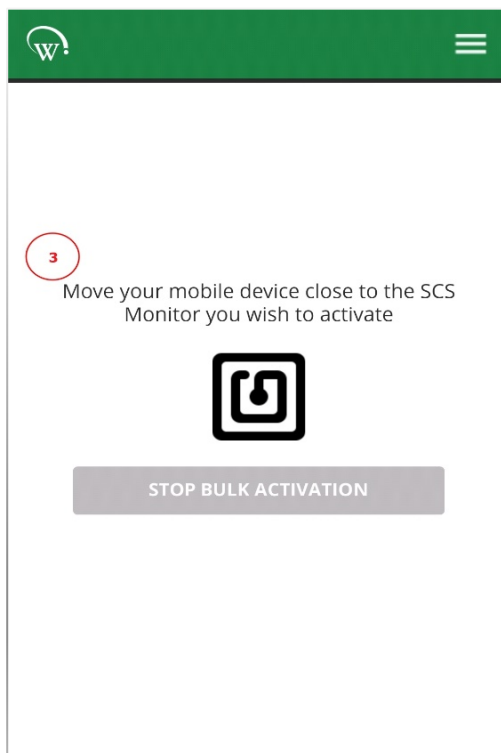


1. From the menu tab, navigate to the BULK ACTIVATE MONITORS tab.



2. “Ready to Scan” screen will be displayed.

From this screen, select START BULK ACTIVATION.



3. “Move your mobile device close to the SCS Monitor you wish to activate” message will be visible.


# Connect™ Monitor Instructions Manual

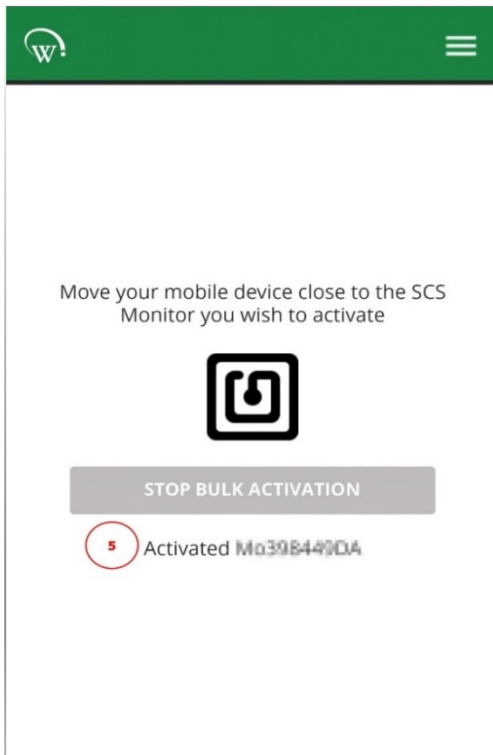
FIELD TRIAL PROTOTYPE SAMPLES




4. Place your mobile phone on top of the Connect Monitor, as depicted, until “CONNECTING MoXXXXXXXX” message is displayed.

 *You may need to hold the phone over the Connect Monitor for a few seconds to establish an NFC connection.*

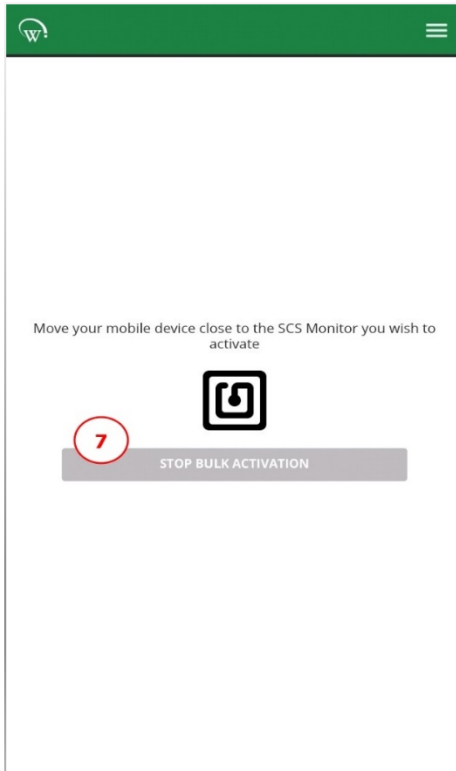
 *If this process takes longer than 5 seconds, try slowly hovering your phone over the device to facilitate alignment of the device NFC module and the phone NFC antenna.*



5. “Activated MoXXXXXXXX” message will be displayed when NFC is enabled.

 *The phone may emit a sound and vibration when NFC is successfully enabled on the Connect Monitor.*

6. Continue activation of the next Connect Monitor by repeating **Step 4**.



7. When all Connect Monitor have been activated, please select STOP BULK ACTIVATION



***It is vital to configure the device to the correct Manufacturer and Owner.***

***-This feature is NOT supported for Bulk Activation in the Field Trial Prototype units. So manufacturer and owner needs to be set up at the point of installation-***



***This ensures only authorized connections can be made to the device, and data collection is only possible by the assigned Owner.***

*Please refer to Field App Quick Steps for detailed instructions on how to:*

- *WT9403\_Set IDs through SCS Connect Field App*
- *WT9404\_Set Asset Details through SCS Connect Field App*

*Available on request.*